

FETAL ABNORMALITIES DETECTION FROM ULTRASOUND IMAGES USING DEEP LEARNING FOR PRENATAL HEALTHCARE

¹T. Rani, ²A. Karthik, ³Ch. Manikanta, ⁴Z. Guru Chandra Prasad, ⁵Y. Sasi Kumar

¹Assistant Professor, Dept. of CSE - AI & ML, St. Ann's College Of Engineering & Technology, Chirala, Andhra Pradesh – 523187, India

^{2,3,4,5}U. G Student, Dept. of CSE - AI & ML, St. Ann's College Of Engineering & Technology, Chirala, Andhra Pradesh – 523187, India

ABSTRACT

Early detection of fetal abnormalities plays a crucial role in reducing infant mortality and improving prenatal care outcomes. Traditional ultrasound diagnosis heavily depends on the expertise of radiologists and may suffer from subjectivity and human error. This paper addresses the problem of automated fetal abnormality detection using deep learning techniques. The proposed system utilizes a Convolutional Neural Network (CNN) model to analyze ultrasound images and classify them as normal or abnormal. Image preprocessing techniques such as resizing, normalization, and noise reduction are applied to improve model performance. The trained model learns discriminative features from ultrasound images and provides accurate predictions. Experimental results demonstrate that the proposed approach achieves high classification accuracy and reliability compared to conventional methods. The system reduces diagnostic time and assists medical professionals in

decision-making. In conclusion, the proposed deep learning-based solution proves to be an effective and efficient tool for fetal abnormality detection, enhancing prenatal diagnosis and healthcare services.

Keywords:

Fetal Abnormality Detection, Ultrasound Images, Deep Learning, CNN, Medical Image Analysis.

INTRODUCTION

Prenatal ultrasound imaging is one of the most commonly used techniques for monitoring fetal growth and detecting congenital abnormalities during pregnancy. Early identification of fetal disorders is crucial for ensuring timely medical intervention and improving maternal and infant health outcomes. Traditionally, ultrasound image analysis is performed manually by experienced radiologists, which can be time-consuming and subject to human error and inter-observer variability. The increasing complexity of medical

imaging data further challenges accurate diagnosis. Recent advancements in artificial intelligence, particularly deep learning, have demonstrated significant potential in medical image analysis and automated diagnosis. Convolutional Neural Networks (CNNs) are highly effective in extracting spatial features from images. This research focuses on automating fetal abnormality detection using CNN-based models applied to ultrasound images. The proposed system aims to enhance diagnostic accuracy, minimize human dependency, and reduce analysis time. By providing reliable predictions, the system supports healthcare professionals in clinical decision-making. The primary objective of this work is to develop an efficient, accurate, and automated fetal abnormality classification system.

LITERATURE SURVEY

Several research studies have focused on the application of machine learning and deep learning techniques in medical image analysis, particularly for ultrasound imaging. Early approaches relied on traditional image processing methods combined with classifiers such as Support Vector Machines (SVM) and k-Nearest Neighbors (KNN). These methods required handcrafted features, which limited their accuracy and robustness. With the advancement of deep learning,

Convolutional Neural Networks (CNNs) have become widely used due to their ability to automatically extract hierarchical features from images. Researchers have applied CNN-based models for fetal organ detection and abnormality classification in ultrasound images. Transfer learning architectures such as VGG, ResNet, and Inception have shown improved performance in several studies. Some works incorporated image segmentation techniques to enhance classification accuracy. However, challenges such as limited labeled datasets, image noise, and high computational requirements still persist. These limitations highlight the need for efficient and reliable automated fetal abnormality detection systems.

RELATED WORK

Related work in fetal abnormality detection has focused on enhancing diagnostic accuracy using advanced deep learning techniques. Several researchers have extended CNN-based models by incorporating transfer learning to improve performance with limited datasets. Some studies combined image segmentation and classification to better isolate fetal regions of interest. Hybrid models integrating CNNs with optimization algorithms have also been proposed to reduce error rates. Recent research emphasizes real-time detection systems deployed through web or

cloud platforms. Although these approaches demonstrate promising results, issues such as computational complexity and generalization remain. This work builds upon existing methods by proposing a simplified, efficient, and deployable CNN-based framework.

EXISTING SYSTEM

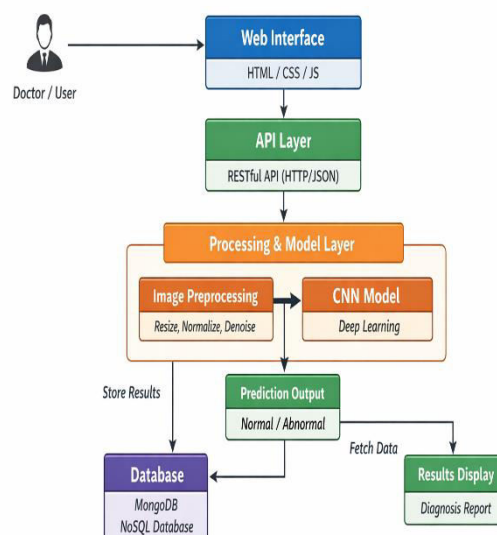
The existing system for fetal abnormality detection primarily relies on manual analysis of ultrasound images by trained radiologists. This approach is highly dependent on the experience and expertise of medical professionals. Manual diagnosis is time-consuming and may lead to inconsistencies due to human fatigue and subjective interpretation. Traditional computer-aided systems use handcrafted features and conventional machine learning classifiers. These systems often struggle with noisy ultrasound images and complex fetal structures. Additionally, existing methods lack real-time processing capabilities. The high cost of advanced diagnostic equipment further limits accessibility in rural healthcare centers. These limitations highlight the need for an automated and reliable diagnostic system.

PROPOSED SYSTEM

The proposed system introduces an automated fetal abnormality detection framework using deep learning techniques.

A Convolutional Neural Network (CNN) is employed to analyze ultrasound images and classify them as normal or abnormal. Image preprocessing methods such as resizing, normalization, and noise reduction are applied to enhance data quality. The trained CNN model automatically extracts relevant features without manual intervention. The system is implemented using Python with TensorFlow/Keras for model development. A web-based interface allows users to upload ultrasound images easily. The system provides fast and accurate predictions to support medical professionals. This approach reduces human error and diagnostic time while improving overall reliability.

SYSTEM ARCHITECTURE



Fetal Abnormality Detection System Architecture

Fig:1 SMART ATTENDANCE APP WITH FACE RECOGNITION

METHODOLOGY DESCRIPTION

CLIENT SIDE:

The client side acts as the user interface of the fetal abnormality detection system and is developed using HTML, CSS, and JavaScript. It provides a simple and responsive web interface where users, such as doctors or healthcare staff, can upload fetal ultrasound images. The frontend ensures ease of use, clear navigation, and real-time interaction with the system.

API REQUEST/APIRESPONSE:

The system follows RESTful API principles for communication between the frontend and backend. HTTP methods such as POST are used to send ultrasound images to the server, while JSON format is used for structured data exchange. Standard HTTP status codes ensure reliable and clear communication.

SERVERSIDE:

The server side is implemented using Flask and follows a layered architecture to separate routing, business logic, and model inference. It handles image preprocessing, model loading, and prediction execution securely and efficiently.

STORE/RETRIEVE:

The system stores prediction results and uploaded image references using database

abstraction methods, enabling smooth retrieval for analysis and record management.

DATABASE:

A NoSQL database such as MongoDB is used to store user data, prediction results, and timestamps. The database ensures scalability, security, and efficient handling of medical data.

RESULTS AND DISCUSSION

HOME PAGE:

The home page serves as the landing interface for the fetal abnormality detection system. It introduces the AI-powered ultrasound image analysis platform and highlights its purpose of assisting prenatal diagnosis.



Fig :2 HOME PAGE

The page allows users to navigate easily to the image upload and diagnosis sections.

ACCOUNT CREATION:

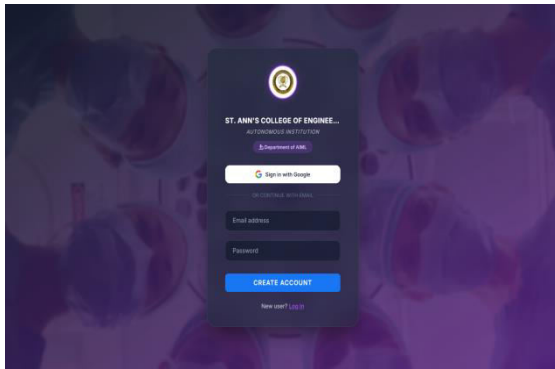


Fig :3 REGISTRATION PAGE

This is a registration form for the FetoScan AI system. It collects essential details like E-mail Id and Password. The form provides options to complete registration or redirect existing users to the login page. The user-friendly interface reduces data entry errors and supports efficient digital attendance management.

LOGIN:

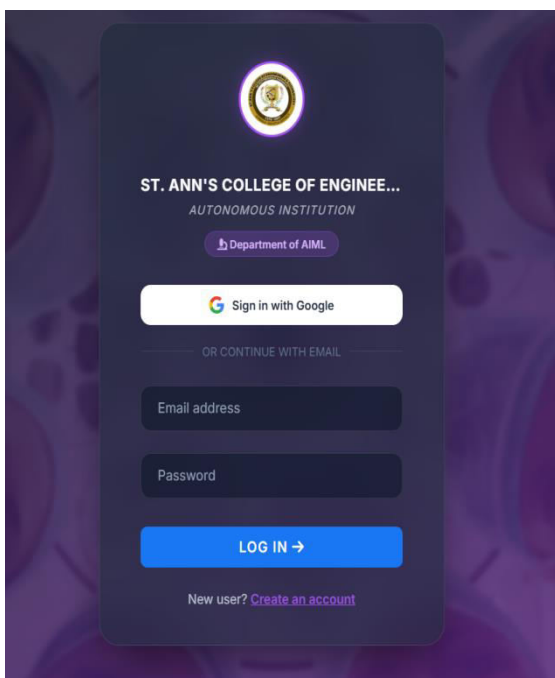


Fig 4: LOGIN PAGE

Any user who has successfully created an account can access the **FetoScan AI** system. Users can securely log in using the credentials provided during the account registration process. This ensures authorized access to the platform and protects user data while enabling seamless interaction with the system's features.

ULTRASOUND IMAGE UPLOAD:

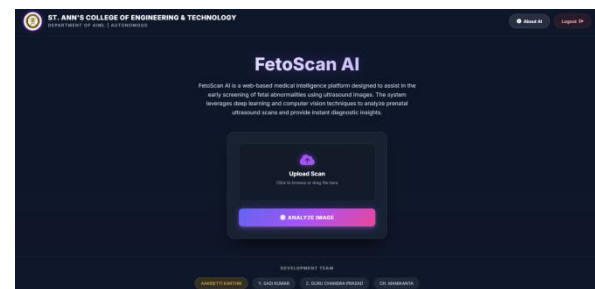


Fig 5: IMAGE UPLOAD PAGE

This page enables users to upload fetal ultrasound images for analysis. The interface supports common image formats and ensures smooth and error-free uploads. Clear instructions guide users through the upload process.

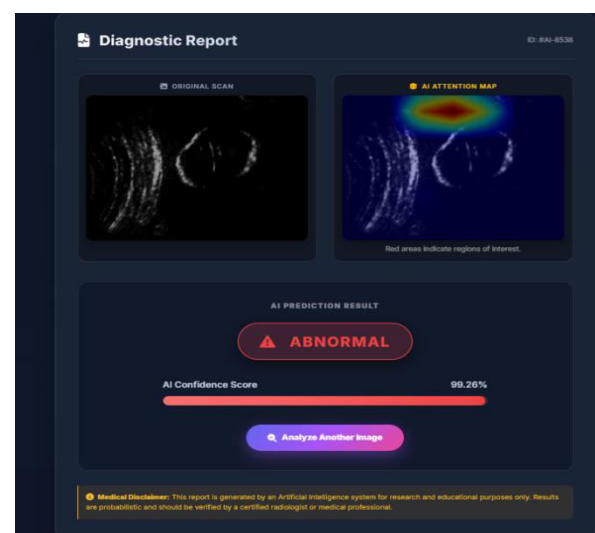


Fig 6: PREDICTION OUTPUT PAGE

After image submission, the system displays the classification result indicating whether the fetus is normal or abnormal. The output is generated using the trained CNN model and presented in a clear and understandable format.

CONCLUSION

This paper presented an automated fetal abnormality detection system using deep learning techniques applied to ultrasound images. The proposed CNN-based model effectively analyzes fetal scans and classifies them as normal or abnormal. The system reduces dependency on manual diagnosis and minimizes human error. Image preprocessing and automated feature extraction improve prediction accuracy. Experimental results demonstrate reliable and consistent performance across different test cases. The web-based implementation enables easy accessibility for healthcare professionals. The system supports timely medical intervention and enhances prenatal care. Overall, the proposed approach proves to be efficient, accurate, and practical for real-world clinical applications.

FUTURE SCOPE

The proposed system can be enhanced by training on larger and more diverse ultrasound datasets to improve generalization. Multi-class classification can be implemented to identify specific

types of fetal abnormalities. Integration with cloud-based platforms would allow remote access and scalability. The system can be extended to support real-time ultrasound video analysis. Advanced deep learning models such as attention-based networks or transformers may further improve accuracy. Mobile application deployment can increase accessibility in rural and remote healthcare centers.

REFERENCE

1. H. K. Chapala, "Securing IoT Networks with SYN-GAN: A Robust Intrusion Detection System Using GAN-Generated Data.," *IAENG International Journal of Computer Science*, vol. 52, no. 7, 17 2025.
2. S. N. K. Polisetty, "An efficient deep learning framework for occlusion face prediction system," *Knowledge and Information Systems*, vol. 65, no. 11, pp. 5043-5063, 11 2023.
3. O. Ronneberger, P. Fischer, and T. Brox, "U-Net: Convolutional Networks for Biomedical Image Segmentation," *Proc. MICCAI*, pp. 234–241, 2015.
4. G. Litjens et al., "A Survey on Deep Learning in Medical Image Analysis," *Medical Image Analysis*, vol. 42, pp. 60–88, 2017.
5. Long, J., Shelhamer, E., & Darrell, T. (2015). Fully Convolutional Networks for Semantic Segmentation. IEEE Conference on Computer Vision and Pattern Recognition (CVPR).

6. K. Suzuki, "Overview of Deep Learning in Medical Imaging," *Radiological Physics and Technology*, vol. 10, no. 3, pp. 257–273, 2017.
7. Chen, L. C., Papandreou, G., Kokkinos, I., et al. (2017). DeepLab: Semantic Image Segmentation with Deep Convolutional Nets. *IEEE Transactions on Pattern Analysis and Machine Intelligence*.
8. I. Goodfellow, Y. Bengio, and A. Courville, *Deep Learning*, MIT Press, Cambridge, MA, USA, 2016.
9. Zhang, C., Sargent, I., Pan, X., et al. (2019). Joint Deep Learning for Land Cover and Land Use Classification. *Remote Sensing of Environment*.
10. A. Krizhevsky, I. Sutskever, and G. E. Hinton, "ImageNet Classification with Deep Convolutional Neural Networks," *NIPS*, 2012.
11. D. Shen, G. Wu, and H. Suk, "Deep Learning in Medical Image Analysis," *Annual Review of Biomedical Engineering*, vol. 19, pp. 221-248, 2017
12. World Health Organization, "Congenital anomalies," WHO Reports, 2023.
13. J. Deng et al., "ImageNet: A Large-Scale Hierarchical Image Database," *CVPR*, 2009.